



# Social economy as a catalyser of the Green Transition

Matthias Neitsch | RREUSE President-Elect  
02 June 2020



[THIS IS EQUIVALENT TO THE WEIGHT OF 137 EIFFEL TOWERS]

OF MATERIAL DIVERTED FROM LANDFILL THROUGH RE-USE, REPAIR AND RECYCLING, WHICH INCLUDED:

**FURNITURE**  
200 000 TONNES  
collected

OUT OF WHICH ↓



**80 000 TONNES**  
re-used

**TEXTILES**  
260 000 TONNES  
collected

OUT OF WHICH ↓



**95 000 TONNES**  
re-used

**ELECTRICALS**  
290 000 TONNES  
collected

OUT OF WHICH ↓



**20 000 TONNES**  
re-used

**BOOKS & RECORDS**  
16 000 TONNES  
collected

OUT OF WHICH ↓



**5 500 TONNES**  
re-used

**BRIC-A-BRAC**  
30 000 TONNES  
collected

OUT OF WHICH ↓



**14 000 TONNES**  
re-used



**27 MEMBERS ACROSS  
25 EUROPEAN COUNTRIES  
AND THE USA**

**850 SOCIAL ENTERPRISES**  
ARE PART OF RREUSE'S WIDER NETWORK

**95 000 EMPLOYEES,  
VOLUNTEERS AND TRAINEES**  
ENGAGED IN THE ACTIVITIES OF  
RREUSE'S MEMBERS

**2 000 SHOPS WELCOMED  
39 000 000 CUSTOMERS**  
[THIS IS EQUIVALENT TO SERVING THE  
WHOLE POPULATION OF POLAND]  
CONTRIBUTING TO AN OVERALL  
RREUSE MEMBER ACTIVITY  
TURNOVER OF € 1 200 000 000

**RREUSE MEMBERS COLLECTED AND HANDLED 22 DIFFERENT MATERIAL STREAMS:**

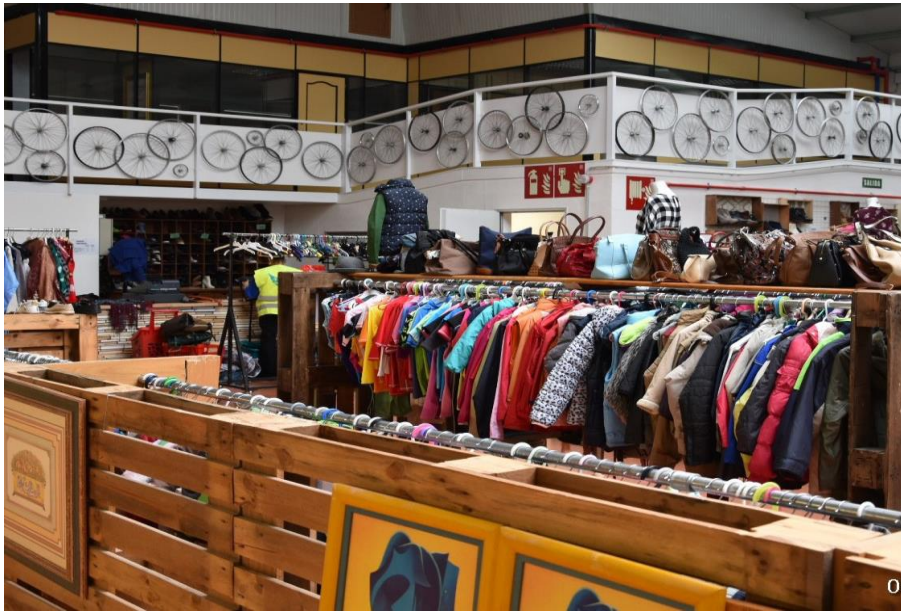
FURNITURE, ELECTRICALS, TEXTILES, BOOKS & RECORDS, BRIC-A-BRAC, TOYS, DIY, BICYCLES, CONSTRUCTION MATERIALS, BIOWASTE, VEGETABLE OIL, FOOD DONATIONS, GLASS, PAPER, WOOD, PACKAGING & PLASTICS, METAL SCRAP, USED CARTRIDGES, BATTERIES, MATTRESSES, PAINT, OTHER MATERIALS



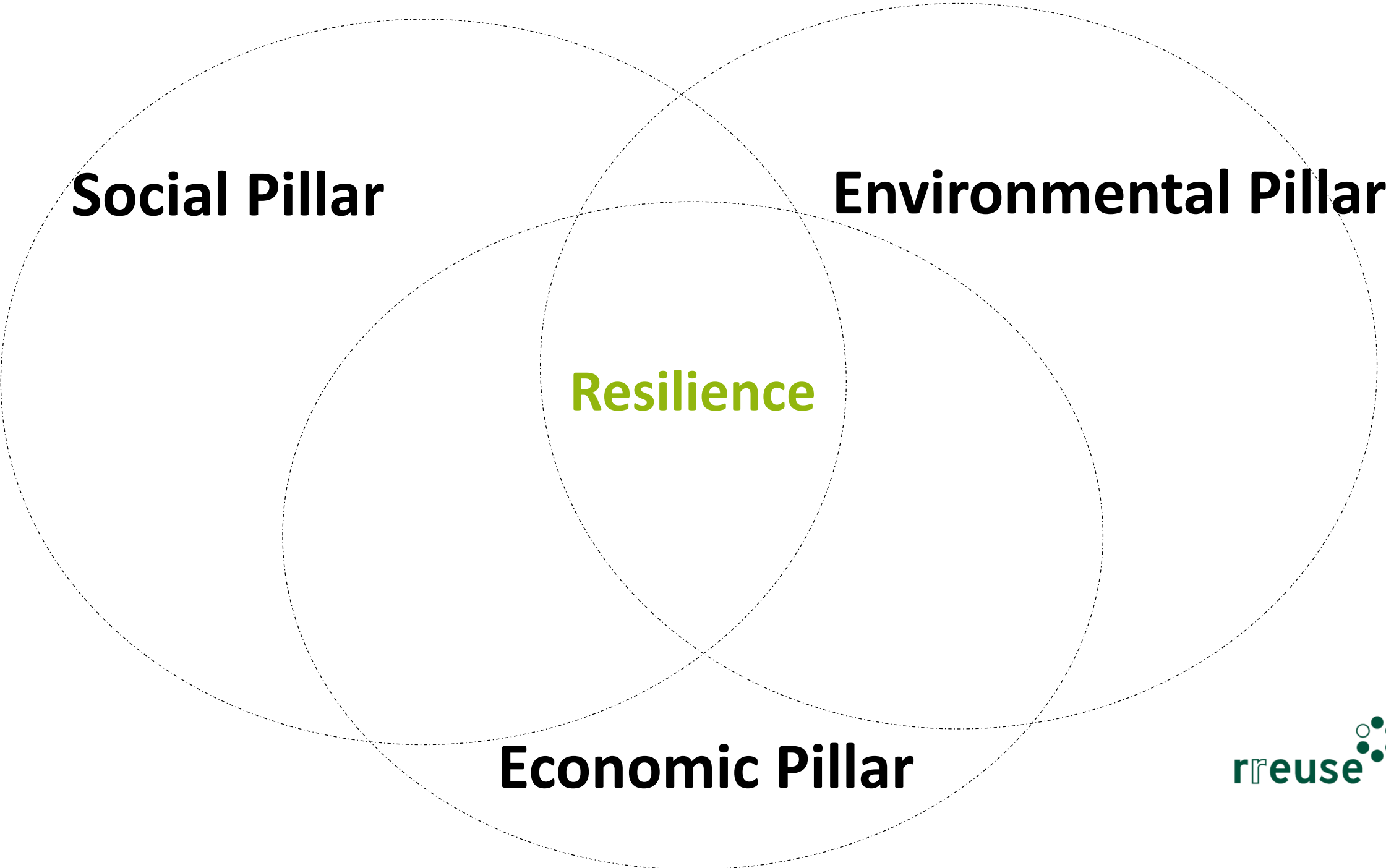
Picture credit: Farsi Prossimo (1) BauKarussell (2) Tomorrowland\_Maarten De Bouw (3) donateNYC (4) Collectif Rotor: lecho-circulaire.com (5) Pixabay (6) Reuseful UK (7)



Picture credit: De Kringwinkel (1, 2,4) AERESS (3) Humana Nova (5)



Picture credit: Berthold Schleich, RREUSE, De Kringwinkel



**Social Pillar**

**Environmental Pillar**

**Resilience**

**Economic Pillar**

**Social Economy  
Action Plan**

**Circular Economy  
Action plan**

**Circular & Social re-use enterprises:  
Producers of  
Resilience**

**Local Economic Wellbeing**



**Social Economy  
Action Plan**

**Circular Economy  
Action plan**

**Highest Efficiency &  
Effectiveness of financial and  
regulatory impact**

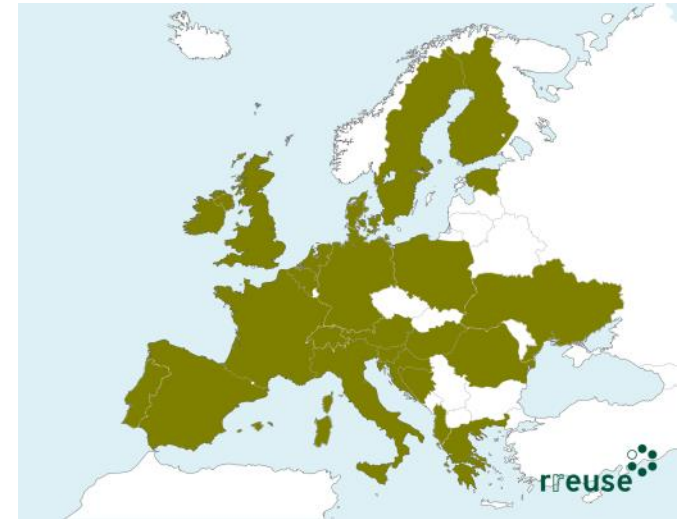
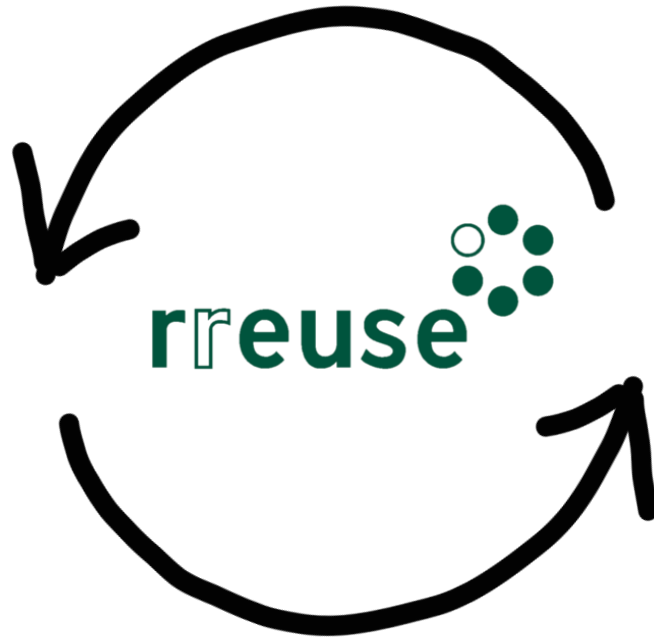
**Local Economic Wellbeing**

**Social Economy  
Action Plan**

**Circular Economy  
Action plan**

**Labour Market  
Textile Collection  
EPR-schemes  
Public Procurement  
Poverty Prevention  
Prioritising Re-Use & Repair  
No VAT for material donations**

**Local Economic Wellbeing**



Picture credit: Cooperativa Sociale Insieme